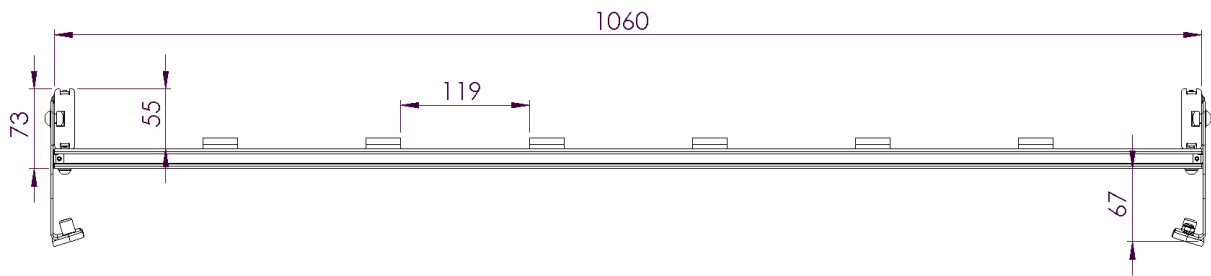
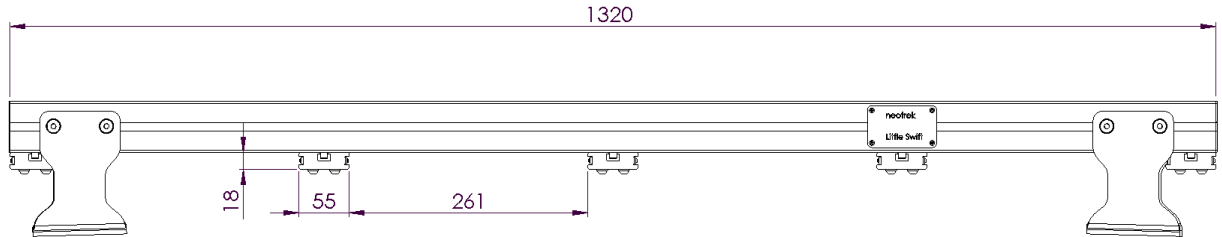


Little Swift Fact Sheet

Dimensions

Side View:

Front / Rear View:



Weights

Item	Weight kg
Slates Polyethylene (Set of 6)	2.67
Floor Slates Aluminium Extrusions (5)	4.07
Side Slates Aluminium Extrusions (2)	2.19
Set of Brackets	0.88
Total Weight Little Swift (With Polyethylene Slates)	9.82

Construction

Stainless steel (3CR12) brackets. Purpose designed lightweight aluminium extrusions. Parts are powder coated. Polyethylene slates to cushion payload/equipment comes standard. All exposed fasteners are stainless steel.

Mounting

Mounts in place of the standard roof rails of the vehicle, using the standard mounting points of the vehicle. No modifications or drilling is needed.

Load Carrying Ability

The Carrying ability of the Little Swift is limited by the carrying capability of the vehicle.

The Little Swift was tested with a total weight of 70 kg (payload + Roof Rack weight) under moderate conditions, however this exceeds the ability of the vehicle and traveling speed was reduced for the test to ensure safety. Note that this was a test and is not recommended for general use.

Heavy loads on Roof Racks affects the handling ability because of the top-heavy nature of the configuration and overloading is not recommended

The carrying ability is recommended to be restricted to 50kg in total for the vehicle. And for safety reasons and speed must be adjusted according to the road conditions to ensure safety.

Note that the Carrying capacity of the Little Swift fitted to a Suzuki Jimny must not be compared directly to that of vehicles more than double the total weight of the Suzuki Jimny.





Shipping and Assembly

The Little Swift is shipped in kit form in a rectangular box 16x13x142 cm. . (±10kg Shipping weight).

During on-line ordering, the on-line shop will quote the cost of shipping. Alternative shipping or Pick-up can be selected when ordering.

All fasteners needed are provided. Proper assembly instructions are provided in booklet format.

The tools required for the assembly and fitment of the Little Swift are listed below.

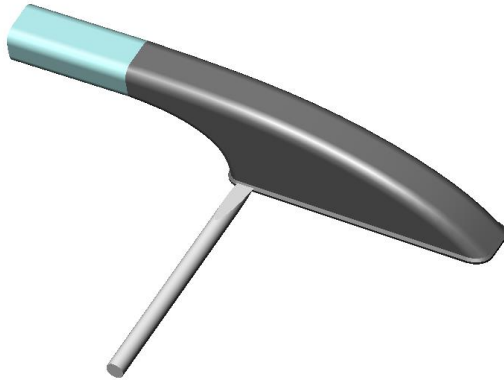
Tools Required			
Item	Quantity	Name	Visual
1	1	Allen Key 5mm	
2	1	Allen Key 4mm	
3	1	10mm spanner	
4	1	Metric Tape Measure (3m or longer) OR 2 meter Tie Down Strap or rope that do not stretch easily (To use for equal length measurement)	

A clips from the assembly instructions :

Identify Nylon Tool:



Start at the right front roof rail cover. Gently wedge the Nylon Tool in-between the plastic cover and the rubber gasket at the position shown below until it un-clips.

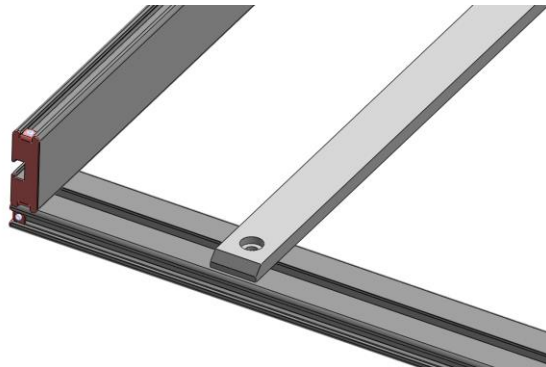


.
.
.

Now take the Button Head M8x12



and secure the Floor Slate joint:



.
.
.

Locate 8 Spacers M6



The illustration below shows where they need to be fitted

